



# Softgel Drying Tunnels



LD1

# Softgel Drying Tunnels

LDT

## Features

- The tunnels are made of self-supporting walls using standard wall panels in a composite construction of two external skins of painted steel sheets or high pressure plastic laminate, with a sealed and insulated interior of extruded Styrofoam. This is a Class 1 fire resistance material, GMP and FDA approved.
- The tunnels are supplied in components and subassemblies to be set and assembled on the client's plant floor using installation accessories included in Technophar shipment; technical assistance and supervision is provided by Technophar for the final installation.
- The tunnels are sized to accept up to 14 stacks of shallow drying trays
- The number of tunnels is determined through calculation based on the output of the encapsulation machine and the type of product to be dried.

## Mechanism

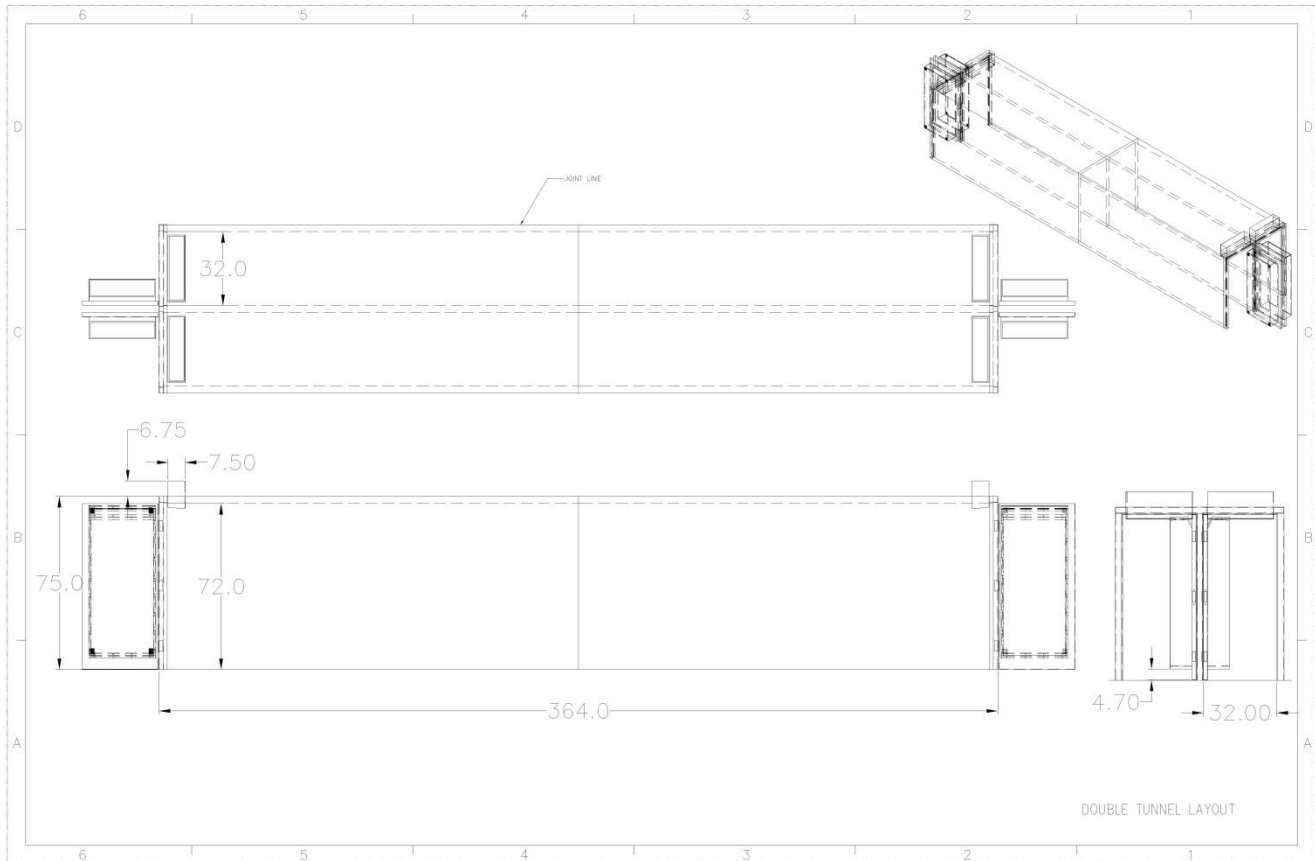
- In this application drying air is supplied to the tunnel at the exit end of the product and pulled out from the tunnel at the entry end of the product.
- The drying air is moving along the tunnel in countercurrent to the product, accumulating moisture as it approaches the end of the tunnel; as such fresh product comes in contact with moist air rather than dry air, preventing the skinning of the capsules.

# Softgel Drying Tunnels

LDT



## Specification



### Drying Tunnels LDT

Dimensions (mm)

364 x 75 x 73

## TECHNOPHAR

Technophar Global Headquarters  
3293 St. Etienne Blvd.  
Windsor, Ontario, Canada N8W 5B1  
Phone: +1 519-946-0800  
[www.technophar.com](http://www.technophar.com)